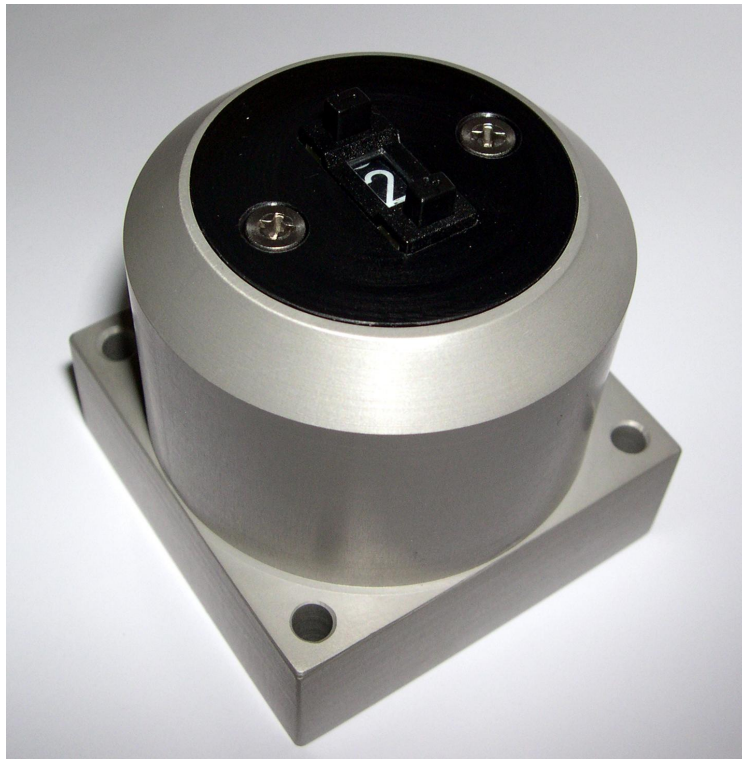


## Microdrive Program Selector



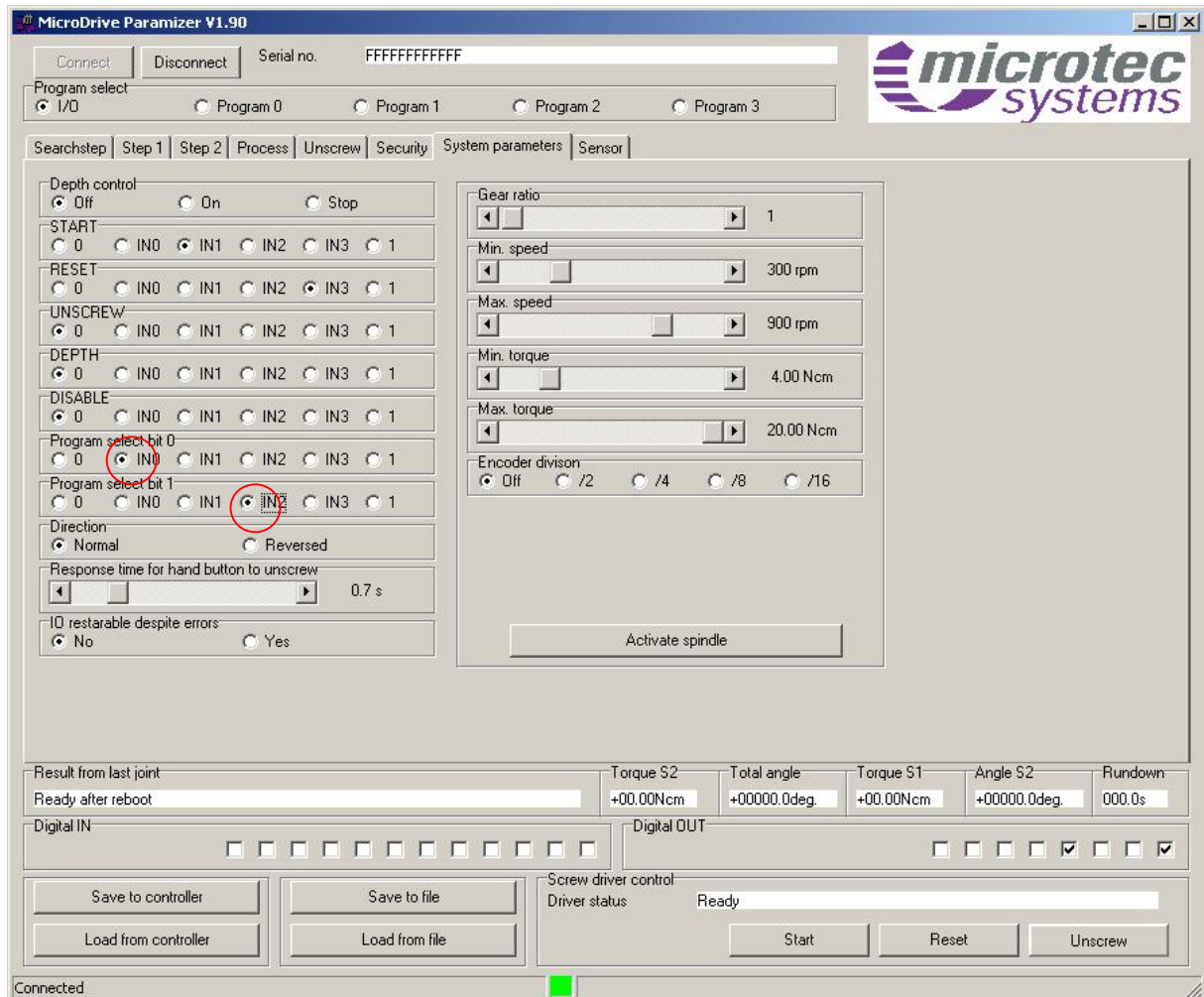
External switch box to select one out of 10 screw tightening programs (as far as supported by the screwdriver controller)

- BCD switch with up, down keys.
- Connector for Screwdriver IO interface
- Cable length 1.5 m
- Mounting Flange 50 x 50 mm
- Dimensions: 50 x 50 x 56 mm

For Microdrive Controller G3: 100-000261-001-1

For Microdrive Controller G4: 100-000262-001-2

## IO Settings with Microdrive G3:



Program Select Bit 0: IN0

Program Select Bit 1: IN2

IN0 and IN1 must not be routed to any other function.

